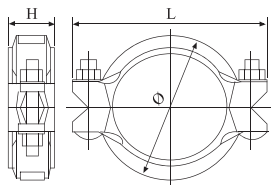
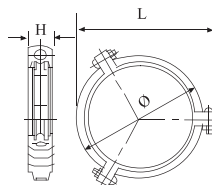


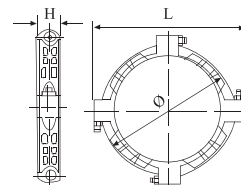
GROOVED COUPLINGS



DN25-DN300



DN350-DN450



DN500-DN600

XGQT2 Flexible Coupling

Nominal Size		Pipe O.D.	Max.Working Pressure		Allowance Pipe End Sep	Max End Load	Bolt Size	Dimensions		
Inch	mm	mm	KPa	psi	mm	N	mm	φ	L	H
								mm	mm	mm
1	25	33.7	2065	300	0-3	2230	2-M10x55	56.5	94	47
1 1/4	32	42.4	2065	300	0-3	3530	2-M10x55	65.5	104	47
1 1/2	40	48.3	2065	300	0-3	4581	2-M10x55	72.5	111	47
2	50	57	2065	300	0-3	6379	2-M10x65	84	119	47
2	50	60.3	2065	300	0-3	7139	2-M10x65	86	121	47
2 1/2	65	73	2065	300	0-3	10463	2-M10x65	98.5	134	47
2 1/2	65	76.1	2065	300	0-3	11371	2-M10x65	102	136	47
3	80	88.9	2065	300	0-5	15518	2-M10x65	114	150	47
4	100	108	2065	300	0-5	22902	2-M12x85	138	180	51
4	100	114.3	2065	300	0-5	25652	2-M12x85	146	189	51
5	125	133	2065	300	0-5	34732	2-M16x100	166	223	51
5	125	139.7	2065	300	0-5	38319	2-M16x100	171	229	51
5	125	141.3	2065	300	0-5	39202	2-M16x100	172.5	232	51
6	150	159	2065	300	0-5	49639	2-M16x100	190	249	51
6	150	165.1	2065	300	0-5	53521	2-M16x100	198	258	51
6	150	168.3	2065	300	0-5	55616	2-M16x100	202	262	51
8	200	216.3	2065	300	0-4.8	91863	2-M20x130	255	324	63
8	200	219.1	2065	300	0-4.8	94257	2-M20x110	256	332	63
10	250	267.4	1205	175	0-4.8	89853	2-M20x150	307	379	63
10	250	273	1205	175	0-4.8	93656	2-M20x150	316	390	63
12	300	318.5	1205	175	0-4.8	127476	2-M20x150	359	434	63
12	300	323.9	1205	175	0-4.8	131835	2-M20x150	370	442	63
12	300	325	1205	175	0-4.8	132732	2-M20x150	370	442	63
14	350	355.6	1205	175	0-6	158903	3-M22x130	403	490	74
14	350	377	1205	175	0-6	178604	3-M22x130	422	514	74
16	400	406.4	1205	175	0-6	207547	3-M22x130	454	566	74
16	400	426	1205	175	0-6	228049	3-M22x130	471	570	74

All data contained here is subject to change without notice.
Note: Max. working pressure refers to FM registration pressure.

GROOVED COUPLINGS



XGQT2 Flexible Coupling

Nominal Size		Pipe O.D. mm	Max.Working Pressure		Allowance Pipe End Sep mm	Max End Load N	Bolt Size mm	Dimensions		
Inch	mm		KPa	psi				φ	L	H
18	450	457.2	1205	175	0-6	262677	3-M22x130			76
18	450	480	1205	175	0-6	289529	3-M22x130	526	620	76
20	500	508	1205	175	0-6	324292	4-M22x130	558	660	78
20	500	530	1205	175	0-6	352989	4-M22x130	576	670	78
24	600	610	1205	175	0-6	467595	4-M22x130			78
24	600	630	1205	175	0-6	498759	4-M22x130	680	790	78