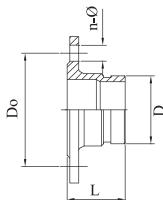


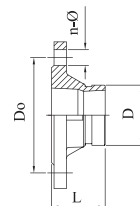
# GROOVED FLANGES



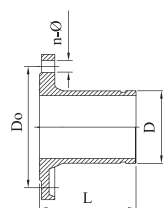
**08A-T-E  
Grooved Flange Table E**



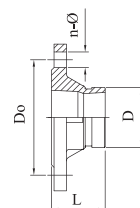
**ANSI150 XGQT08D  
Grooved Flange ANSI150**



**ANSI150 XGQT08  
Grooved Flange ANSI150**



**XGQT08  
Grooved Flange PN16**



Nominal Size		Pipe O.D.	Max. Working Pressure	Dimensions									
				ANSI150				PN16			Table E		
				n*φ	Do	L		n*φ	Do	L	n*φ	Do	L
Inch	mm	mm	psi	mm	mm	XGQT08	XGQT08D	mm	mm	mm	mm	mm	mm
2	50	57	500					4-18	125	65			
2	50	60.3	500	4-19	121	102	65	4-18	125	65	4-18	114	65
2-1/2	65	73	500	4-19	140	102	65	4-18	178	65			
2-1/2	65	76.1	500					4-18	145	65	4-18	127	65
3	80	88.9	500	4-19	153	102	65	8-18	160	65	4-18	146	65
4	100	108	500					8-18	180	70			
4	100	114.3	500	8-22	191	102	70	8-18	180	70	8-18	178	70
5	125	133	500					8-18	210	70			
5	125	139.7	500					8-18	210	70	8-18	210	70
5	125	141.3	500	8-22	216	152	70	8-23	216	70			
6	150	159	500					8-23	240	70			
6	150	165.1	500					8-23	240	70	8-23	235	70
6	150	168.3	500	8-22	241	152	70	8-23	240	70			
8	200	219.1	300	8-22	298	152	80	12-23	295	80	8-23	292	80
10	250	273	300	12-25	362	203	85	12-25	355	85	12-23	356	85
12	300	323.9	300	12-25	432	203	90	12-25	410	90	12-27	406	90
12	300	325	300					12-25	410	90			
14	350	377	300					16-25	470	100			
16	400	426	300					16-30	525	110			
18	450	480	300					20-30	585	115			
20	500	530	300					20-34	650	125			
24	600	630	300					20-41	770	135			

All data contained here is subject to change without notice.  
Note: Max. working pressure refers to FM registration pressure.