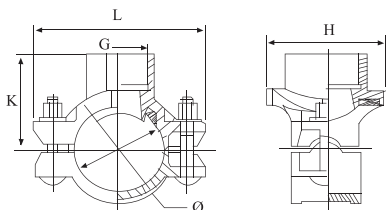


MECHANICAL TEES



XGQT3 Mechanical Tee Threaded

Nominal Size		Pipe O.D. mm	Bolt Size mm	Max. Working Pressure		Dimensions				Hole Cut Dia	
Inch	mm			KPa	psi	K	φ	L	H	Inch	mm
2x1/2	50x15	60.3xG1/2	2-M10x65	2065	300	60	89	126	73	1 1/2"	38
2x3/4	50x20	60.3xG3/4	2-M10x65	2065	300	60	89	126	73	1 1/2"	38
2x1	50x25	60.3xG1	2-M10x65	2065	300	66.5	89	126	73	1 1/2"	38
2x1 1/4	50x32	60.3xG1 1/4	2-M10x65	2065	300	66.5	86	126	73	1 3/4"	44
2x1 1/2	50x40	60.3xG1 1/2	2-M10x65	2065	300	66.5	86	126	73	1 3/4"	44
2 1/2x1/2	65x15	73xG1/2	2-M12x75	2065	300	66.5	101	132	73	1 1/2"	38
2 1/2x3/4	65x20	73xG3/4	2-M12x75	2065	300	66.5	101	132	73	1 1/2"	38
2 1/2x1	65x25	73xG1	2-M12x75	2065	300	73.5	101	132	73	1 1/2"	38
2 1/2x1 1/4	65x32	73xG1 1/4	2-M12x75	2065	300	75.5	101	132	80	1 3/4"	44
2 1/2x1 1/2	65x40	73xG1 1/2	2-M12x75	2065	300	75.5	101	132	83	1 7/8"	48
2 1/2x1/2	65x15	76.1xG1/2	2-M12x75	2065	300	67	104	138	73	1 1/2"	38
2 1/2x3/4	65x20	76.1xG3/4	2-M12x75	2065	300	67	104	138	73	1 1/2"	38
2 1/2x1	60x25	76.1xG1	2-M12x75	2065	300	75	104	138	73	1 1/2"	38
2 1/2x1 1/4	65x32	76.1xG1 1/4	2-M12x75	2065	300	77	104	138	80	1 3/4"	44
2 1/2x1 1/2	65x40	76.1xG1 1/2	2-M12x75	2065	300	77	104	138	83	1 7/8"	48
3x 1/2	80x15	88.9xG1/2	2-M12x75	2065	300	74	118	150	73	1 1/2"	38
3x3/4	80x20	88.9xG3/4	2-M12x75	2065	300	74	118	150	73	1 1/2"	38
3x1	80x25	88.9xG1	2-M12x75	2065	300	82	118	150	73	1 1/2"	38
3x1 1/4	80x32	88.9xG1 1/4	2-M12x75	2065	300	84.5	118	150	80	1 3/4"	44
3x1 1/2	80x40	88.9xG1 1/2	2-M12x75	2065	300	84.5	118	150	93	2 1/8"	54
3x2	80x50	88.9xG2	2-M12x75	2065	300	85.5	113	150	94	2 1/2"	64
4x1/2	100x15	108xG1/2	2-M12x75	2065	300	84	137	174	73	1 1/2"	38
4x3/4	100x20	108xG3/4	2-M12x75	2065	300	84	137	174	73	1 1/2"	38
4x1	100x25	108xG1	2-M12x75	2065	300	92	137	174	73	1 1/2"	38
4x1 1/4	100x32	108xG1 1/4	2-M12x75	2065	300	94	137	174	80	1 3/4"	44
4x1 1/2	100x40	108xG1 1/2	2-M12x75	2065	300	94	137	174	93	2 1/8"	54
4x2	100x50	108xG2	2-M12x75	2065	300	98	137	174	107	2 3/4"	70
4x2 1/2	100x65	108xG2 1/2	2-M12x75	2065	300	102	137	174	117	3 1/8"	79
4x1/2	100x15	114.3xG1/2	2-M12x75	2065	300	87	144	180	73	1 1/2"	38
4x3/4	100x20	114.3xG3/4	2-M12x75	2065	300	87	144	180	73	1 1/2"	38

All data contained here is subject to change without notice.
Note: Max. working pressure refers to FM registration pressure.

MECHANICAL TEES



**XGQT3
Mechanical Tee Threaded**

Nominal Size		Pipe O.D.	Bolt Size	Max. Working Pressure		Dimensions				Hole Cut Dia	
Inch	mm	mm	mm	KPa	psi	K	Φ	L	H	Inch	mm
4x1	100x25	114.3xG1	2-M12x75	2065	300	95	144	180	73	1 1/2"	38
4x1 1/4	100x32	114.3xG1 1/4	2-M12x75	2065	300	97	144	180	80	1 3/4"	44
4x1 1/2	100x40	114.3xG1 1/2	2-M12x75	2065	300	97	144	180	93	2 1/8"	54
4x2	100x50	114.3xG2	2-M12x75	2065	300	101	144	180/184	107	2 3/4"	70
4x2 1/2	100x65	114.3xG2 1/2 A	2-M12x75	2065	300	105	144	180/184	117	3 1/8"	79
4x2 1/2	100x65	114.3xG2 1/2	2-M12x75	2065	300	105	144	180/184	117	3 1/8"	79
4x3	100x80	114.3xG3	2-M12x75	2065	300	102.5	139	184	119	3 1/2"	89
5x1/2	125x15	133xG1/2	2-M12x95	2065	300	96.5	162	196	73	1 1/2"	38
5x3/4	125x20	133xG3/4	2-M12x95	2065	300	96.5	162	196	73	1 1/2"	38
5x1	125x25	133xG1	2-M12x95	2065	300	104.5	162	196	73	1 1/2"	38
5x1 1/4	125x32	133xG1 1/4	2-M12x95	2065	300	106.5	162	196	80	1 3/4"	44
5x1 1/2	125x40	133xG1 1/2	2-M12x95	2065	300	107.5	164	196	93	2 1/8"	54
5x2	125x50	133xG2	2-M16x100	2065	300	111.5	165	213	107	2 3/4"	70
5x2 1/2	125x65	133xG2 1/2	2-M16x100	2065	300	115.5	165	213	117	3 1/8"	79
5x3	125x80	133xG3	2-M16x100	2065	300	115.5	165	213	129	3 1/2"	89
5x1/2	125x15	139.7xG1/2	2-M12x95	2065	300	100	170	203	73	1 1/2"	38
5x3/4	125x20	139.7xG3/4	2-M12x95	2065	300	100	170	203	73	1 1/2"	38
5x1	125x25	139.7xG1	2-M12x95	2065	300	108	170	203	73	1 1/2"	38
5x1 1/4	125x32	139.7xG1 1/4	2-M12x95	2065	300	110	170	203	80	1 3/4"	44
5x1 1/2	125x40	139.7xG1 1/2	2-M12x95	2065	300	111	172	203	93	2 1/8"	54
5x2	125x50	139.7xG2	2-M16x100	2065	300	115	172	220	107	2 3/4"	70
5x2 1/2	125x65	139.7xG2 1/2 A	2-M16x100	2065	300	119	172	220	117	3 1/8"	79
5x2 1/2	125x65	139.7xG2 1/2	2-M16x100	2065	300	119	172	220	117	3 1/8"	79
5x3	125x80	139.7xG3	2-M16x100	2065	300	119	172	220	129	3 1/2"	89
6x1/2	150x15	159xG1/2	2-M12x95	2065	300	109.5	188	223	73	1 1/2"	38
6x3/4	150x20	159xG3/4	2-M12x95	2065	300	109.5	188	223	73	1 1/2"	38
6x1	150x25	159xG1	2-M12x95	2065	300	117.5	188	223	73	1 1/2"	38
6x1 1/4	150x32	159xG1 1/4	2-M12x95	2065	300	119.5	188	223	80	1 3/4"	44
6x1 1/2	150x40	159xG1 1/2	2-M12x95	2065	300	122	192	223	96	2 1/4"	57
6x2	150x50	159xG2	2-M16x100	2065	300	125.5	193	242	107	2 3/4"	70
6x2 1/2	150x65	159xG2 1/2	2-M16x100	2065	300	130	193	242	117	3 1/8"	79
6x3	150x80	159xG3	2-M16x100	2065	300	130	193	242	129	3 1/2"	89
6x1/2	150x15	165.1xG1/2	2-M12x95	2065	300	112.5	195	229	73	1 1/2"	38
6x3/4	150x20	165.1xG3/4	2-M12x95	2065	300	112.5	195	229	73	1 1/2"	38
6x1	150x25	165.1xG1	2-M12x95	2065	300	120.5	195	229	73	1 1/2"	38
6x1 1/4	150x32	165.1xG1 1/4	2-M12x95	2065	300	122.5	195	229	80	1 3/4"	44
6x1 1/2	150x40	165.1xG1 1/2	2-M12x95	2065	300	125	199	229	96	2 1/4"	57

All data contained here is subject to change without notice.
Note: Max. working pressure refers to FM registration pressure.

MECHANICAL TEES



XGQT3 Mechanical Tee Threaded

Nominal Size		Pipe O.D.	Bolt Size	Max.Working Pressure		Dimensions				Hole Cut Dia	
Inch	mm	mm	mm	KPa	psi	K	φ	L	H	Inch	mm
6x2	150x50	165.1xG2	2-M16x100	2065	300	128.5	199	245	107	2 3/4"	70
6x2 1/2	150x65	165.1xG2 1/2A	2-M16x100	2065	300	133	199	245	117	3 1/8"	79
6x2 1/2	150x65	165.1xG2 1/2	2-M16x100	2065	300	133	199	245	117	3 1/8"	79
6x3	150x80	165.1xG3	2-M16x100	2065	300	133	199	245	129	3 1/2"	89
6x1/2	150x15	168.3xG1/2	2-M12x95	2065	300	114	198	232	73	1 1/2"	38
6x3/4	150x20	168.3xG3/4	2-M12x95	2065	300	114	198	232	73	1 1/2"	38
6x1	150x25	168.3xG1	2-M12x95	2065	300	122	198	232	73	1 1/2"	38
6x1 1/4	150x32	168.3xG1 1/4	2-M12x95	2065	300	124	198	232	80	1 3/4"	44
6x1 1/2	150x40	168.3xG1 1/2	2-M12x95	2065	300	126	201	232	96	2 1/4"	57
6x2	150x50	168.3xG2	2-M16x100	2065	300	130	201	248	107	2 3/4"	70
6x2 1/2	150x65	168.3xG2 1/2A	2-M16x100	2065	300	134	201	248	117	3 1/8"	79
6x2 1/2	150x65	168.3xG2 1/2	2-M16x100	2065	300	134	201	248	117	3 1/8"	79
6x3	150x80	168.3xG3	2-M16x100	2065	300	134	201	248	129	3 1/2"	89
8x1	200x25	219.1xG1	2-M16x100	2065	300	147.5	249	300	73	1 1/2"	38
8x1 1/4	200x32	219.1xG1 1/4	2-M16x100	2065	300	149.5	249	300	80	1 3/4"	44
8x1 1/2	200x40	219.1xG1 1/2	2-M16x100	2065	300	151.5	253	300	96	2 1/4"	57
8x2	200x50	219.1xG2	2-M16x100	2065	300	155.5	253	300	107	2 3/4"	70
8x2 1/2	200x65	219.1xG2 1/2A	2-M16x100	2065	300	160	253	300	117	3 1/8"	79
8x2 1/2	200x65	219.1xG2 1/2	2-M16x100	2065	300	160	253	300	117	3 1/8"	79
8x3	200x80	219.1xG3	2-M16x100	2065	300	160	253	300	129	3 1/2"	89
10x2	250x50	273xG2	2-M20x110	1205	175	182.5	207	382	107	2 3/4"	70
10x2 1/2	250x65	273xG2 1/2	2-M20x110	1205	175	186.5	207	382	117	3 1/8"	79
10x3	250x80	273xG3	2-M20x110	1205	175	186.5	207	382	129	3 1/2"	89