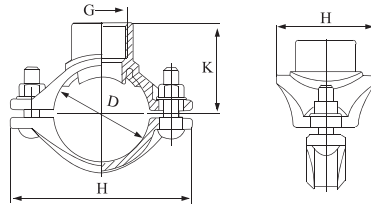


MECHANICAL TEES



**XGQT3D
Branch Outlet**

Nominal Size		Pipe O.D. mm	Bolt Size mm	Max. Working Pressure		Dimensions				Hole Cut Dia	
Inch	mm			KPa	psi	K	Φ	L	H	Inch	mm
1x1/2	25x15	33.7xG1/2	2-M10x35	2065	300	40.5	51	91	52	1 3/16"	20.6
1 1/4x1/2	32x15	42.4xG1/2	2-M10x35	2065	300	43.5	55	100	66	1 3/16"	30.2
1 1/4x3/4	32x20	42.4xG3/4	2-M10x35	2065	300	43.5	55	100	66	1 3/16"	30.2
1 1/4x1	32x25	42.4xG1	2-M10x35	2065	300	51	55	100	66	1 3/16"	30.2
1 1/2x1/2	40x15	48.3xG1/2	2-M10x35	2065	300	46	64	105	66	1 3/16"	30.2
1 1/2x3/4	40x20	48.3xG3/4	2-M10x35	2065	300	48	64	105	66	1 3/16"	30.2
1 1/2x1	40x25	48.3xG1	2-M10x35	2065	300	53.5	64	105	66	1 3/16"	30.2
2x1/2	50x15	60.3xG1/2	2-M10x35	2065	300	52	76	120	66	1 3/16"	30.2
2x3/4	50x20	60.3xG3/4	2-M10x35	2065	300	54	76	120	66	1 3/16"	30.2
2x1	50x25	60.3xG1	2-M10x35	2065	300	59.5	76	120	66	1 3/16"	30.2
2 1/2Ax1/2	65x15	73xG1/2	2-M10x35	2065	300	58.5	89	133	66	1 3/16"	30.2
2 1/2Ax3/4	65x20	73xG3/4	2-M10x35	2065	300	60.5	89	133	66	1 3/16"	30.2
2 1/2Ax1	65x25	73xG1	2-M10x35	2065	300	66	89	133	66	1 3/16"	30.2
2 1/2x1/2	65x15	76.1xG1/2	2-M10x35	2065	300	60	92	136	66	1 3/16"	30.2
2 1/2x3/4	65x20	76.1xG3/4	2-M10x35	2065	300	62	92	136	66	1 3/16"	30.2
2 1/2x1	65x25	76.1xG1	2-M10x35	2065	300	67.5	92	136	66	1 3/16"	30.2

All data contained here is subject to change without notice.
Note: Max. working pressure refers to FM registration pressure.